



Crystal Palace Park Road, SE26 | Guide Price £425,000

020 8702 9333

[crystalpalace@pedderproperty.com](mailto:crystalpalace@pedderproperty.com)

**pedder**  
We live local







# In General

- Two bedroom Victorian conversion
- Share of the freehold
- Private entrance
- 876 sq ft / 81.4 sq m
- Spacious kitchen with island bar
- Generous hallway for flexible use
- Opposite Crystal Palace Park

# In Detail

Guide price £425,000 - £450,000

A well presented two double bedroom ground floor period conversion situated on a sought after road directly opposite Crystal Palace Park.

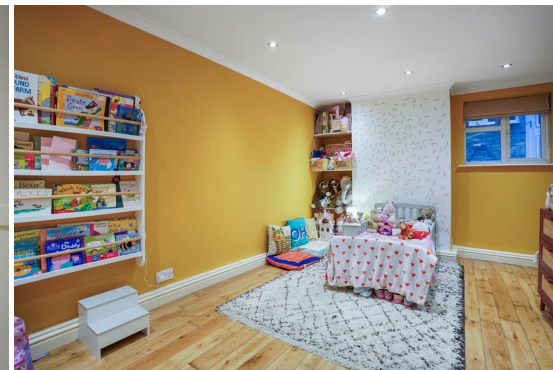
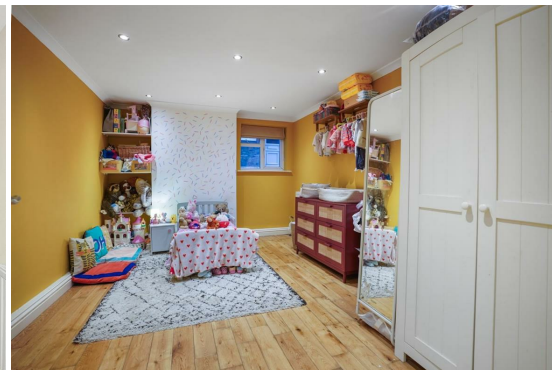
Accessed via its own private entrance, the property offers 876 sq ft / 81.4 sq m of well-proportioned living space, including a generous hallway that can easily double as a home office area if both bedrooms are in full-time use.

The 14ft 9in kitchen features ample cabinetry, granite worktops, and a central island — ideal for casual dining or entertaining. The reception room provides a cosy and inviting space to relax, while the modern bathroom has been tastefully upgraded with stylish matt black fittings.

Additional benefits include a share of freehold and a leafy setting.

This attractive detached Victorian building enjoys a prime setting with easy access to Penge East and West stations, local amenities on the High Street, and the vibrant heart of Crystal Palace. The nearby Crystal Palace Park offers 200 acres of green space, a popular weekly food market, and a calendar of community events throughout the year.

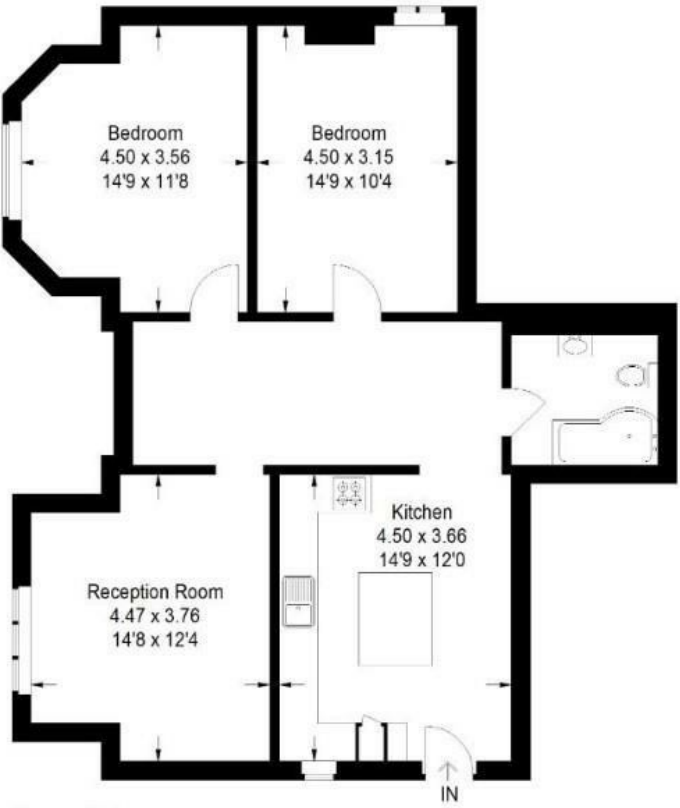
EPC: C | Council Tax Band: B | Lease: TBC Years remaining | SC: £120pcm | BI: Incl. in SC.



# Floorplan

Crystal Palace Park Road, SE26

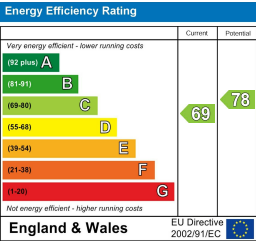
Approximate Gross Internal Area  
81.4 sq m / 876 sq ft



Ground Floor

Copyright www.pedderproperty.com © 2025

These plans are for representation purposes only as defined by RICS - Code of Measuring  
Not drawn to Scale. Windows and door openings are approximate. Please check all dimens  
shapes and compass bearings before making any decisions reliant upon them.



Pedder Property Ltd trading as Pedder for themselves and for the vendor/landlord of this property whose agents they are, give notice that (1) these particulars do not constitute any part of an offer or contract, (2) all statements contained within these particulars are made without responsibility on the part of Pedder or the vendor/landlord, (3) whilst made in good faith, none of the statements contained within these particulars are to be relied upon as a statement of representation or fact, (4) any intending purchaser/tenant must satisfy him/herself by inspection or otherwise as to the correctness of each of the statements contained within these particulars, (5) the vendor/landlord does not make or give either Pedder or any person in their employment any authority to make or give representation or warranty whatsoever in relation to this property.